



A.I.W

NEW

PS210

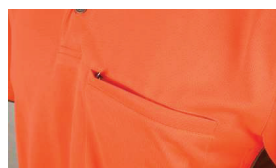
UNISEX COOLDRY® VENTED POLO

FABRIC

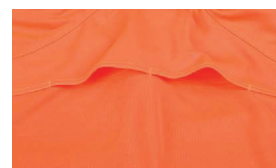
CoolDry® - 160gsm - 100% Polyester.

STYLE

Unisex mini waffle trim fluoro polo with contrast panels, cool vent across back shoulder yoke, reflective piping and sleeve V sashes, zip pocket and striped collar.



LEFT CHEST ZIPPERED POCKET



BACK YOKE VENTILATION

PS210 - AIWX COOLDRY VENTED POLO

| SIZE REFERENCES | 8 | 10 | 12 | 14 | 16 | 18 | 20 | 22 | 24/26 | 28/30 |
|-----------------|-----|----|------|----|------|----|------|-----|-------|-------|
| EASY FIT | 2XS | XS | S | M | L | XL | 2XL | 3XL | 5XL | 7XL |
| HALF CHEST | 47 | 50 | 53.5 | 56 | 58.5 | 61 | 63.5 | 66 | 71 | 76 |
| BODY LENGTH | 65 | 68 | 72 | 74 | 76 | 78 | 80 | 81 | 82 | 83 |



FLUORO ORANGE/ASH



FLUORO YELLOW/ASH



BAC K VIEW



COOLDRY FABRIC



MOISTURE WICKING



ANTI BACTERIAL



UV PROTECTION



QUICK DRY



BREATHABLE



EASY CARE

Danzo™

Trusted Professional Wear