

# No Gusset A4 Presentation Folder

Artwork Specifications

## No Gusset A4 Presentation Folder

### Print Ready Artwork Requirement:

Artwork to be supplied as a PDF file.

Artwork to be set up as CMYK or Pantone color mode.

All the text must be outlined/ convert to path.

All images and elements must be embed . No trim, crop or registration marks.

Artwork to be supplied at 100% 50% 25% or 10%. The correct proportion is important.

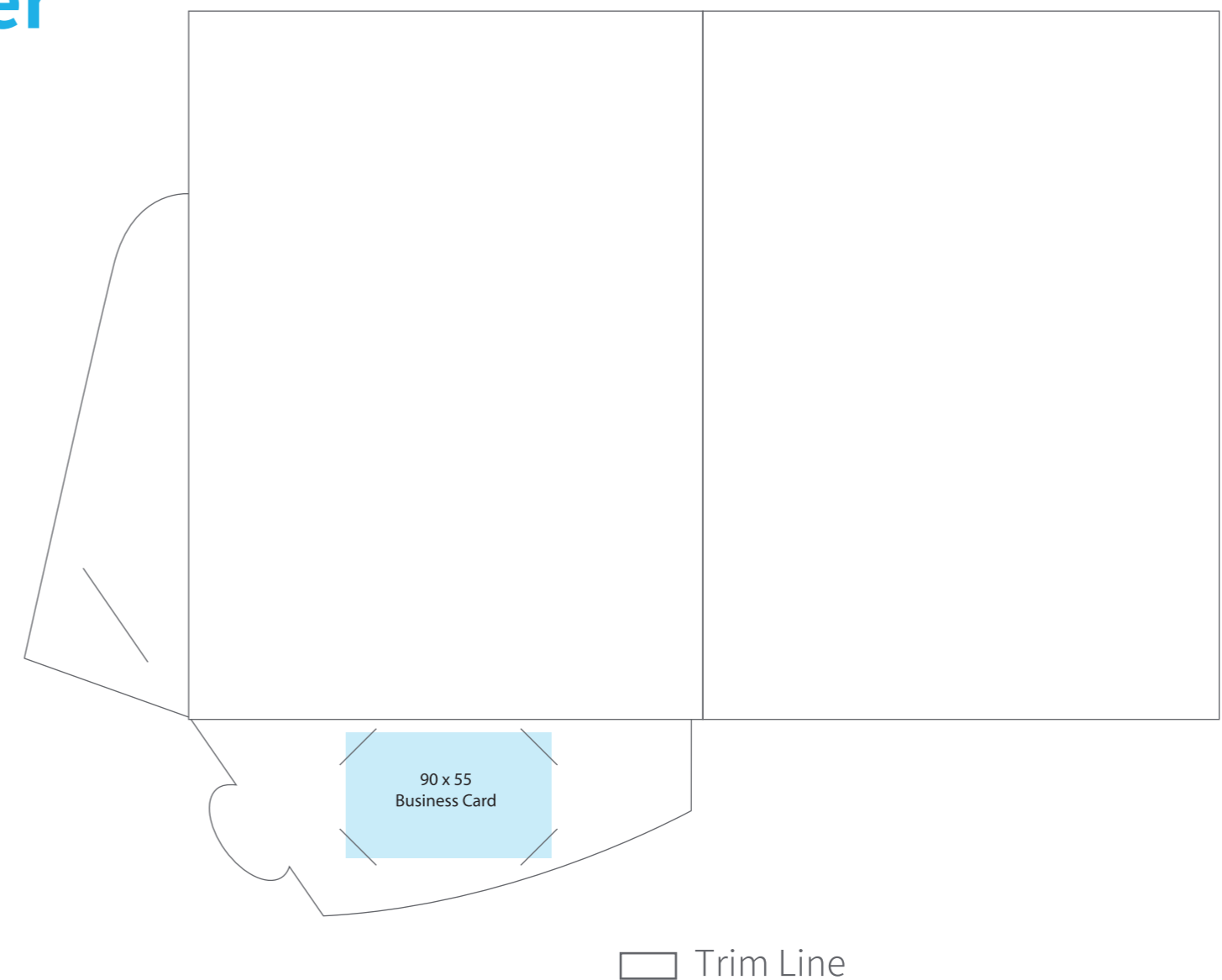
Photographic images should be supplied at 150dpi or better resolution.

### Send Artwork:

Email to [artwork@bigbanner.com.au](mailto:artwork@bigbanner.com.au) if size is less than 20MB.

For large artwork, use free service of [www.wetransfer.com](http://www.wetransfer.com)/[www.hightail.com](http://www.hightail.com), or any other website to upload file and send us the download link.

(with clear reference of your order/invoice number)



# 10mm A4 Presentation Folder

Artwork Specifications

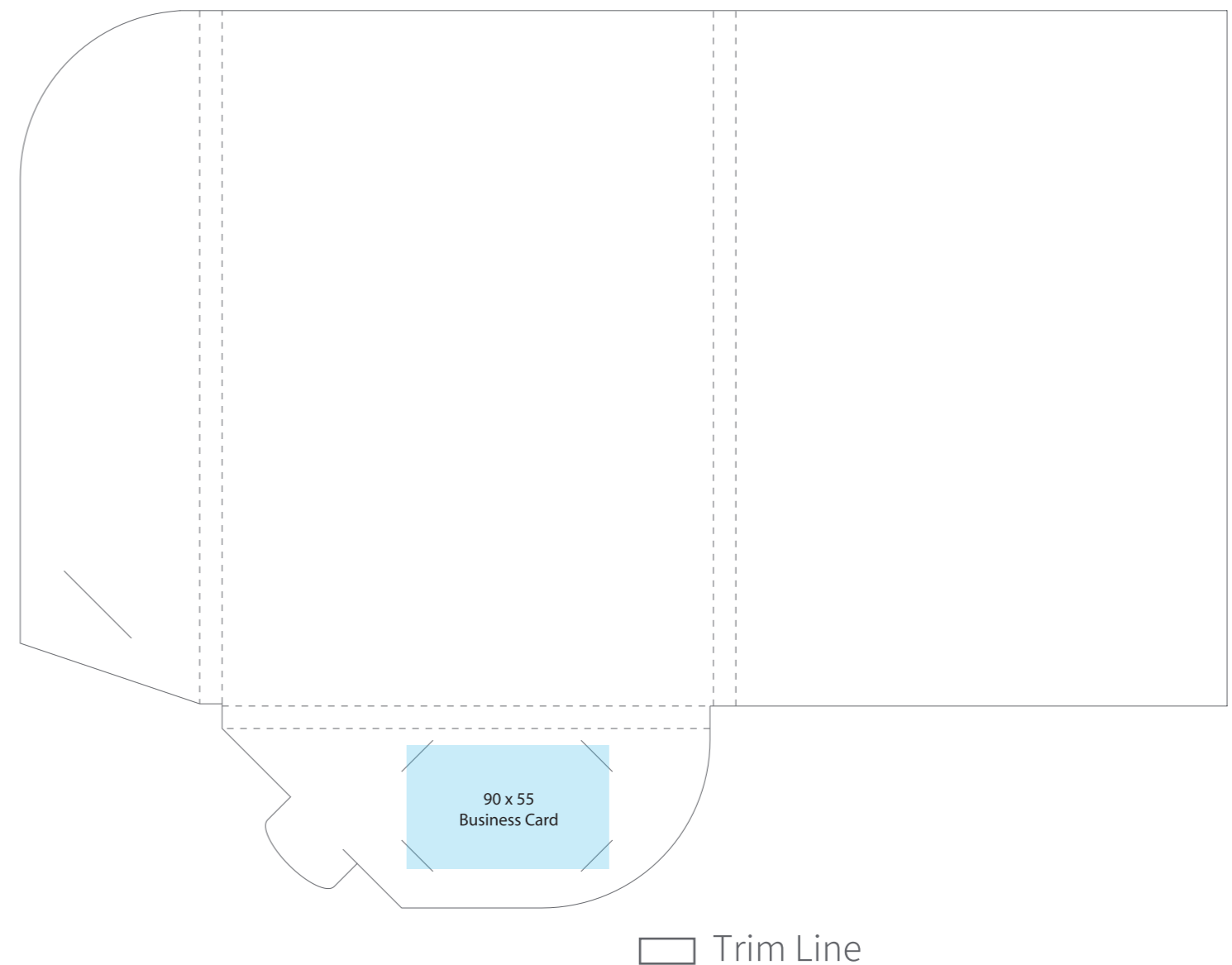
## 10mm A4 Presentation Folder

### Print Ready Artwork Requirement:

- Artwork to be supplied as a PDF file.
- Artwork to be set up as CMYK or Pantone color mode.
- All the text must be outlined/ convert to path.
- All images and elements must be embed . No trim, crop or registration marks.
- Artwork to be supplied at 100% 50% 25% or 10%. The correct proportion is important.
- Photographic images should be supplied at 150dpi or better resolution.

### Send Artwork:

- Email to [artwork@bigbanner.com.au](mailto:artwork@bigbanner.com.au) if size is less than 20MB.
- For large artwork, use free service of [www.wetransfer.com](http://www.wetransfer.com)/[www.hightail.com](http://www.hightail.com), or any other website to upload file and send us the download link.  
(with clear reference of your order/invoice number)



# 5mm A4 Presentation Folder

Artwork Specifications

## 5mm A4 Presentation Folder

### Print Ready Artwork Requirement:

- Artwork to be supplied as a PDF file.
- Artwork to be set up as CMYK or Pantone color mode.
- All the text must be outlined/ convert to path.
- All images and elements must be embed . No trim, crop or registration marks.
- Artwork to be supplied at 100% 50% 25% or 10%. The correct proportion is important.
- Photographic images should be supplied at 150dpi or better resolution.

### Send Artwork:

- Email to [artwork@bigbanner.com.au](mailto:artwork@bigbanner.com.au) if size is less than 20MB.
- For large artwork, use free service of [www.wetransfer.com](http://www.wetransfer.com)/[www.hightail.com](http://www.hightail.com), or any other website to upload file and send us the download link.  
(with clear reference of your order/invoice number)

