

# Prize Wheel

## Installation Manual



### WARNING



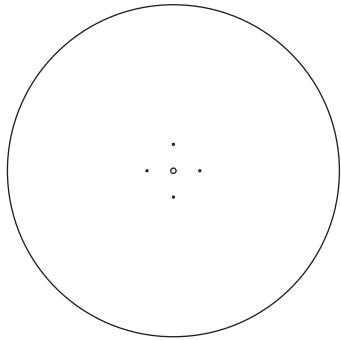
Edge of spinning wheel  
may cause injury

转盘旋转时 请勿触碰

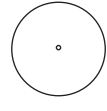


1300 550 168  
[www.bigbanner.com.au](http://www.bigbanner.com.au)

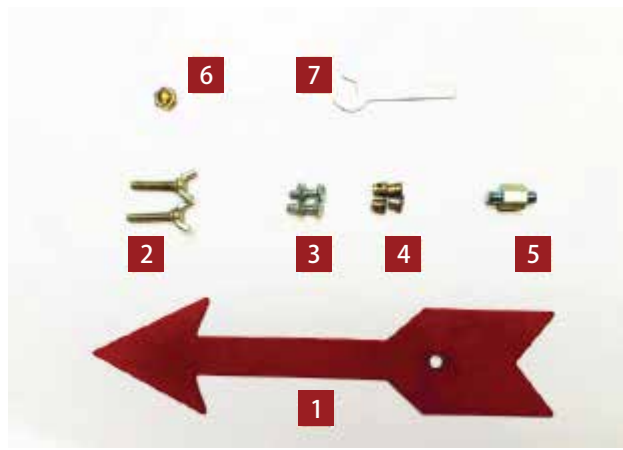
# What's in the box?



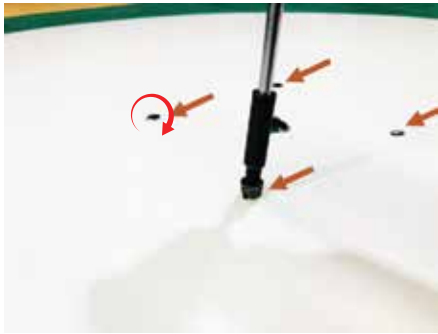
Big round panel x 1



Small panel x 1 (Optional)



Base stand x 1  
Wheel holder x 1



## STEP 1 #4

Lay down the big round panel on a flat surface with graphic side facing up, #4 bolts screwed into the 4 holes as shown the above image.



## STEP 2 #3

Turn the big round panel to facing down, install the *wheel holder* onto the back side of big round panel. Screw #3 bolts into #4, safely secure the big round panel onto the *wheel holder*.



## STEP 3 #2

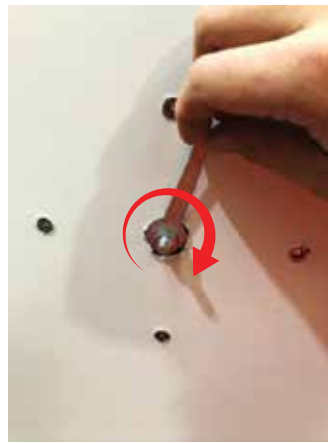
Screw #2 *wing bolts* in the position marked on the image above.

**\* Note: #2 wing bolts are for wheel speed adjustment, Over-Twist will cause damage**



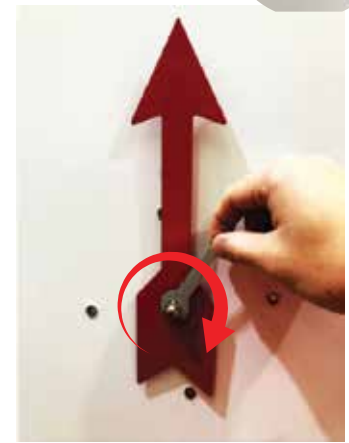
## STEP 4

Insert the Assembled big round panel and wheel holder into the *base stand*, adjust the height and twist the knob tight clockwise to lock up the sections



## STEP 5 #5 #7

Insert #5 bolt into the hole with graphic side facing towards you, tighten clockwise.



## STEP 6 #6 #7

Secure the prize wheel #1 arrow (place the small panel after the arrow if you have one) with #6 bolt on to the prize wheel, using #7 wrench to tighten #6 bolt clockwise

**\* The #1 arrow must be installed on the prize wheel to avoid potential risk of wheel falling off.**

**Your Prize Wheel Is Ready to Use!**