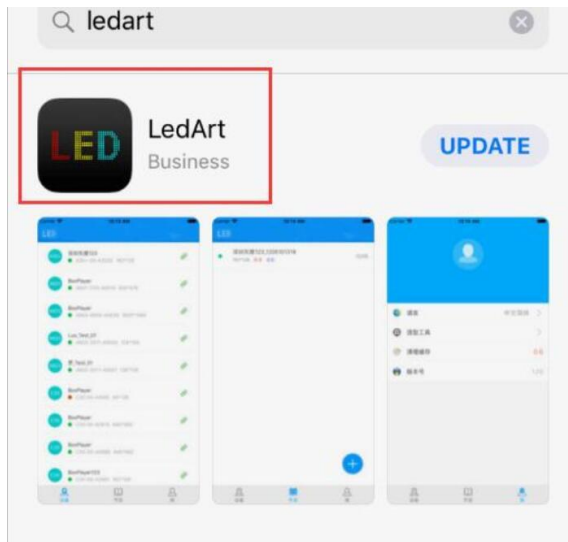


1. How to install software on your Phone

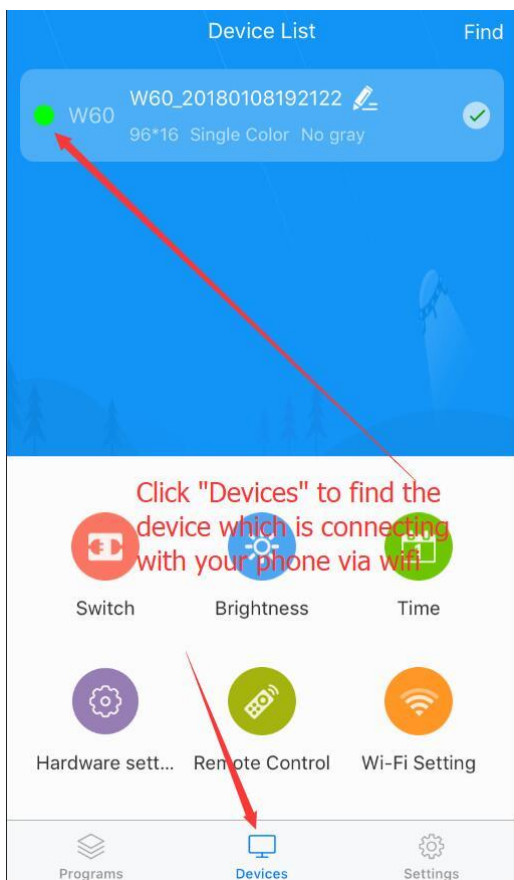
Step1: search 'ledart' in App Store or Android market try to find this app, and install it:

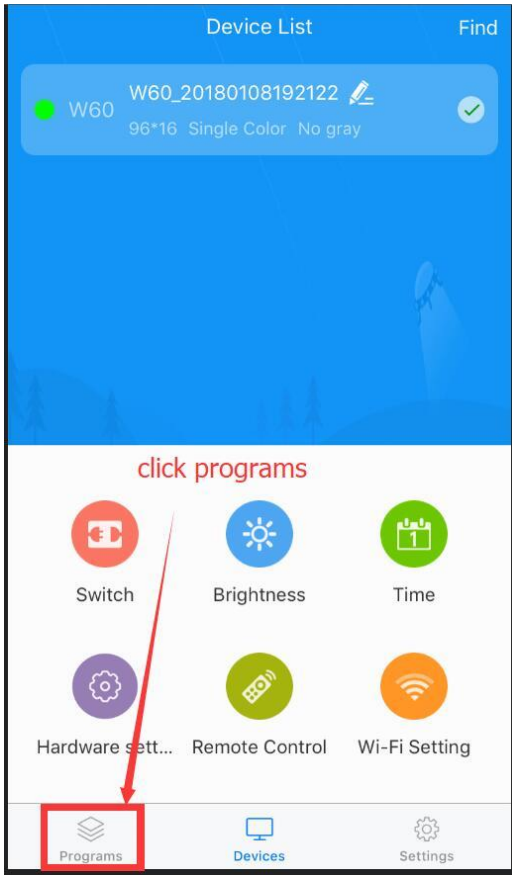


Step2: after finish installation, firstly turn the led board on, then go to "setting -> wifi" in iPhone, turn on the wifi and find the wifi network named like "D10-17-BEBB8A" or "W61-14455776637", choose it. **Notice:** the default password for wifi connection is 88888888

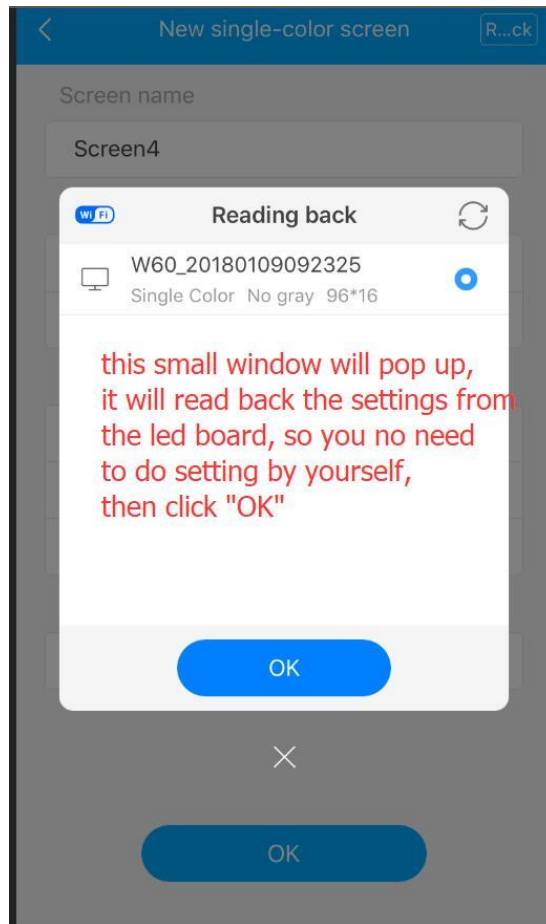
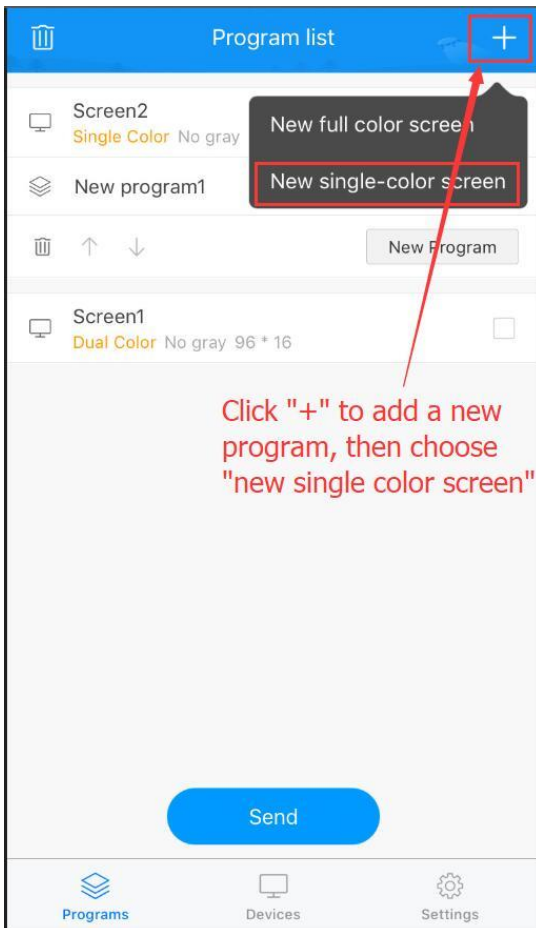
**** Click "always keep connection" when there is a prompt on your phone ****

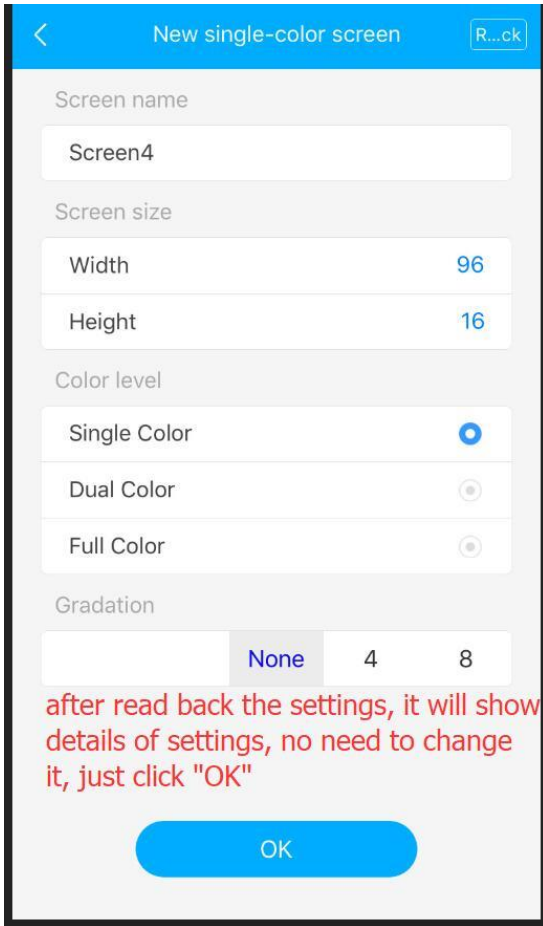
Step3: open the app you just installed, click "devices" , then you will see your screen information, then click "programs"



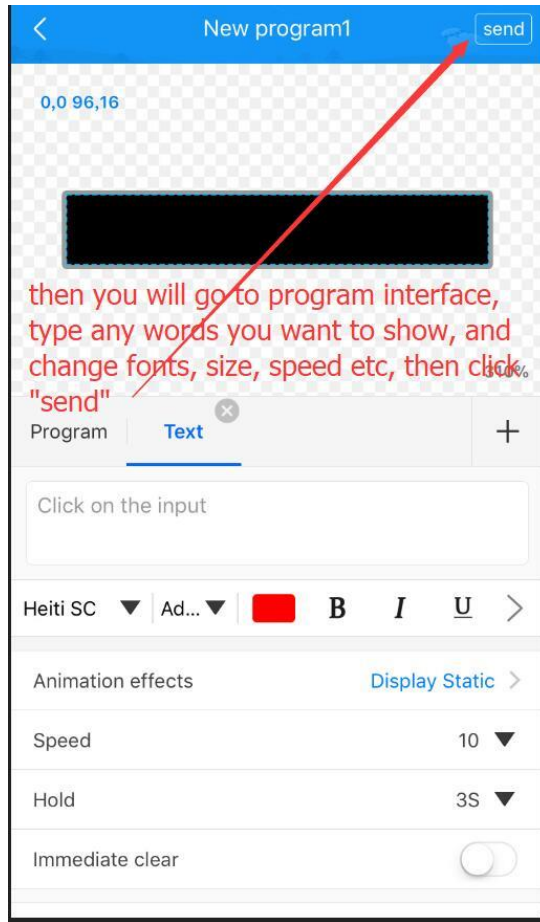


If your LED Board is single color or dual color, see steps below:

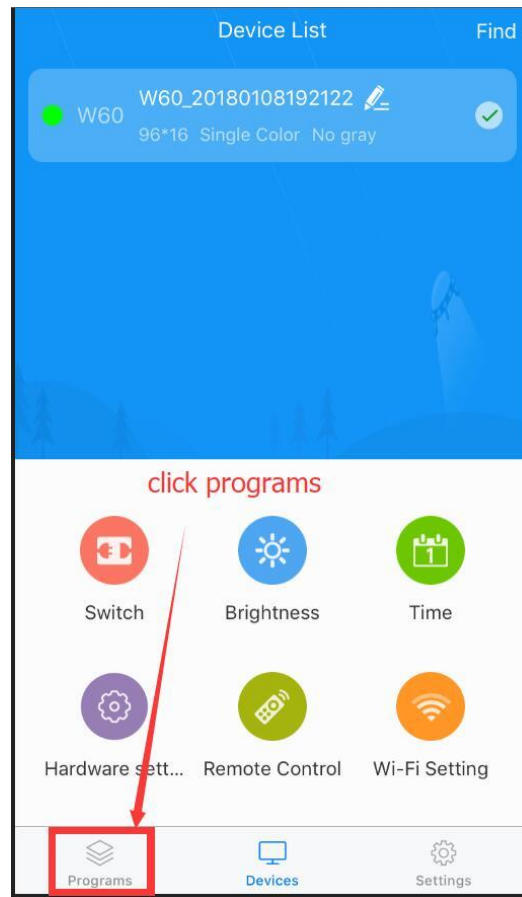
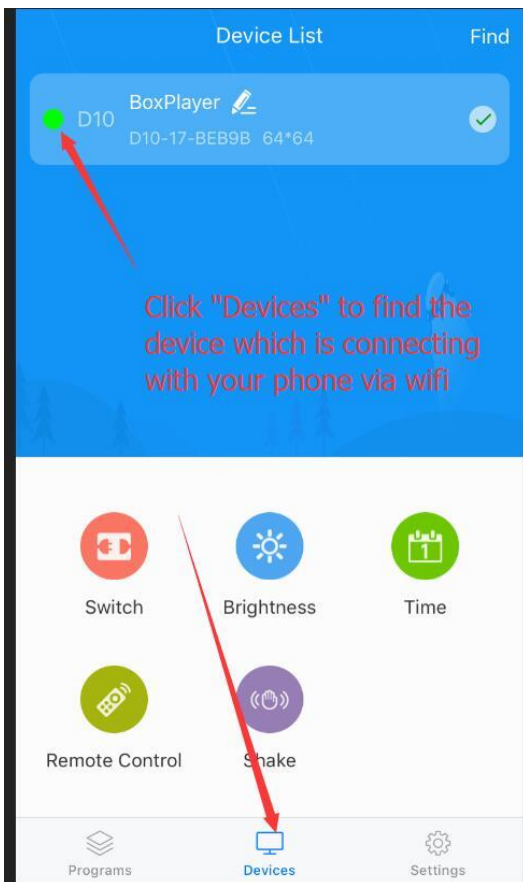


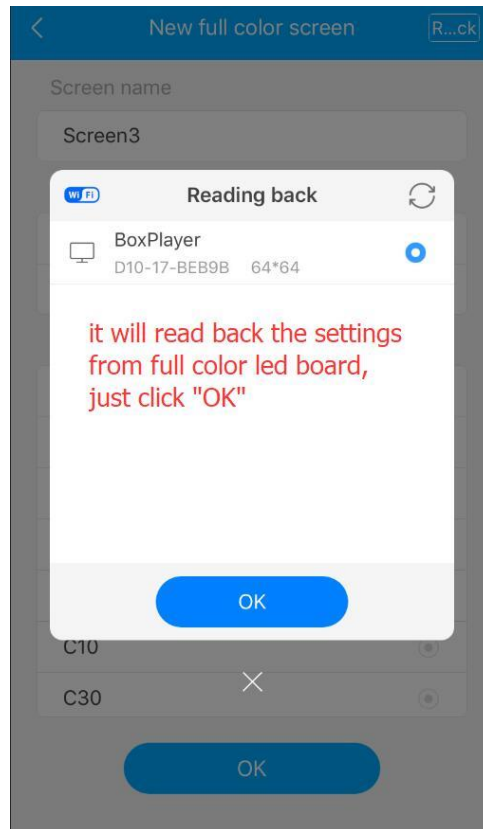
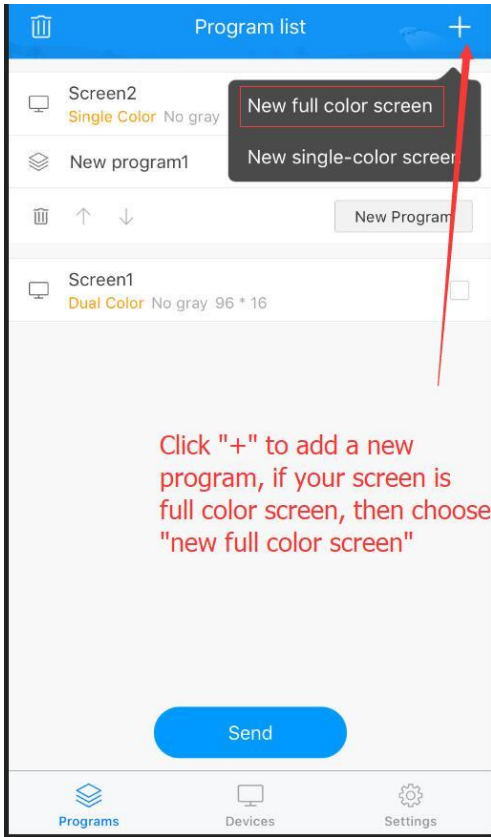


after read back the settings, it will show details of settings, no need to change it, just click "OK"



If your LED board is full color, then see steps below:





< New full color screen R...ck

Screen name
Screen3

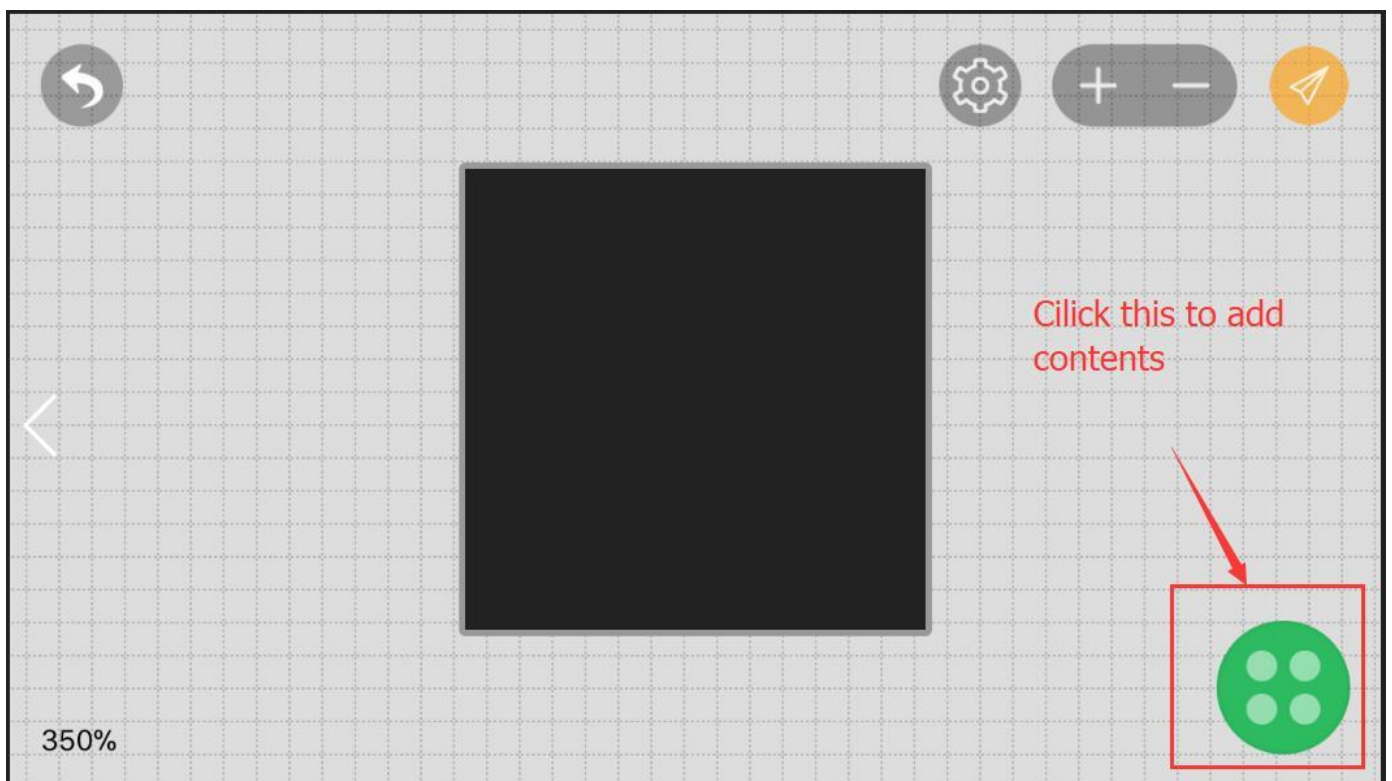
Screen size
Width 64
Height 64

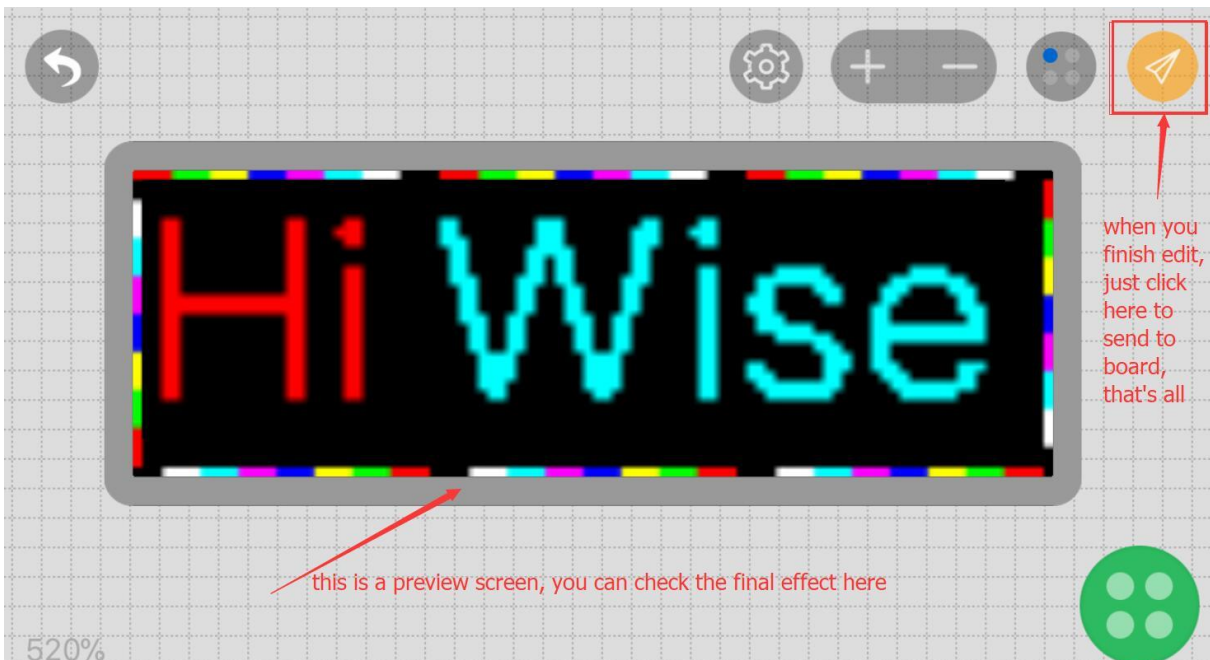
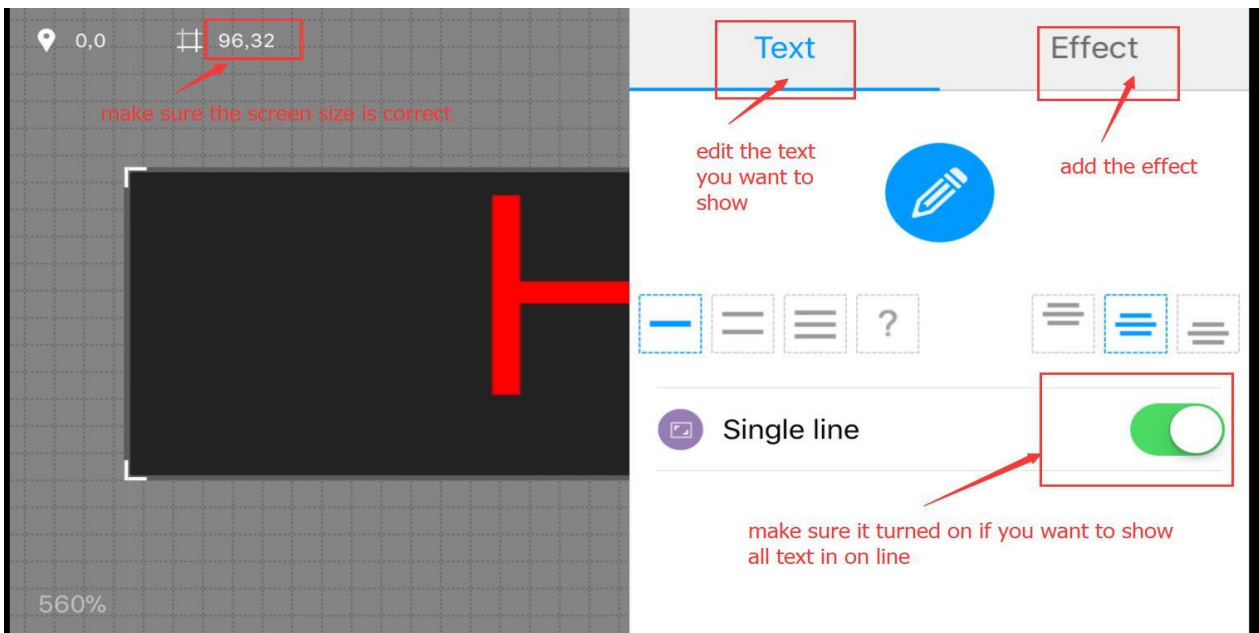
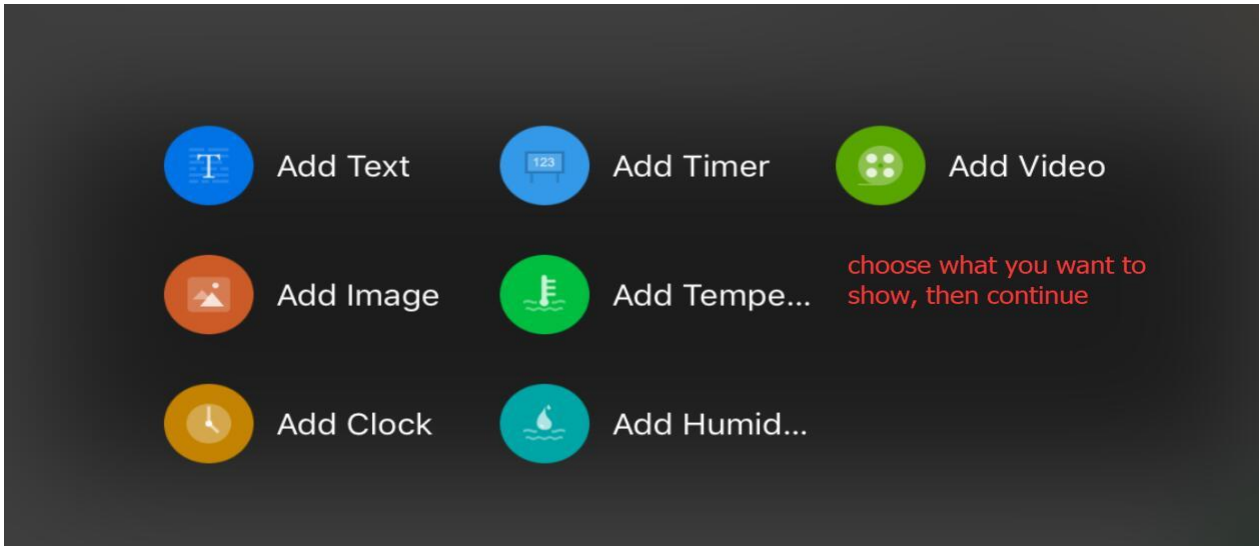
Device model

A30	<input type="radio"/>
A30+	<input type="radio"/>
C10	<input type="radio"/>
C30	<input type="radio"/>
D10	<input checked="" type="radio"/>
D20	<input type="radio"/>
D30	<input type="radio"/>

OK

it will get the settings back from led board itself, so you no need to change anything, just click "ok" to continue





2. How to install app in your android phone

You can search the app name of “ledart” in play store, then download it.

3. How to use software on your windows PC

Download link:

Single (Dual) Color LED Board:

<https://www.dropbox.com/s/mkf8hi0mq8zggge/HD2018%20V1.0.17.4.exe?dl=0>

Full Color LED Board:

<https://www.dropbox.com/s/lg40og60vry1u09/HDPlayer.7.10.42.0.exe?dl=0>

Step1: unzip this file, you will get and exe file, and run it.

Step2: after the app is running, click “wifi” icon to connect the LED board wifi hotspot in your computer.

Step3: then you can use this software to control your screen, more detailed operations please check another manual :
“LED Computer manual V2.0.docx”

Notice: the default password for wifi connection is 88888888, system setting password is 888.